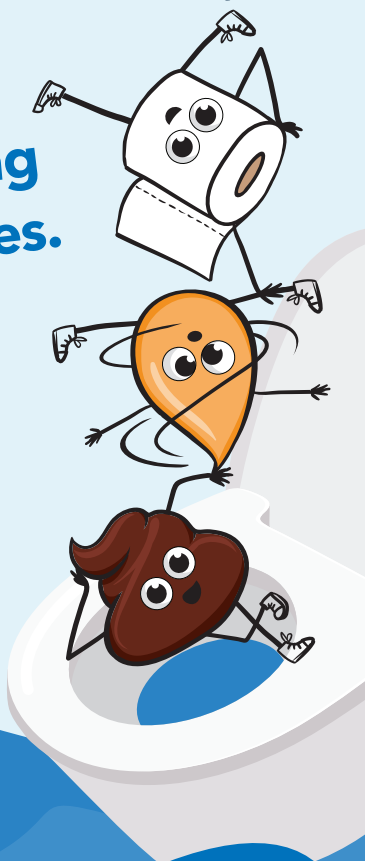


Let's break it down

Only flush pee,
poo, and paper.

Bin everything
else, like wipes.

Keep porcelain,
pipes, and people
happy. Don't flush
and forget, let's
change our habits.



07 838 6699



info@hcc.govt.nz



HamiltonCityCouncil

hamilton.govt.nz



Hamilton
City Council
Te kaunihera o Kirikiriroa

Bin anything other than pee, poo or paper, like:



- sanitary products
- disposable nappies
- liners
- baby/flushable wipes
- cleaning wipes
- contraceptives
- cotton buds
- cotton wool
- razors
- toothbrushes
- contact lenses
- incontinence pads
- hair
- colostomy bags
- plasters
- medicines
- dental floss
- strong chemicals
- wood
- stones or concrete
- plastic wrapping
- children's toys
- rubber gloves
- towels and rags
- clothing
- underwear
- fats or oils
- engine oil
- bandages
- syringes and needles
- tights and pantyhose
- cigarette butts.

Wastewater is the water from toilets, sinks, showers, washing machines, dishwashers, and industrial processes. Flushing any of these items into the wastewater system can cause:

blockages

and wastewater could flood your home

huge issues

at our Wastewater Treatment Plant

harm for staff

who maintain the wastewater pipes and pumps.